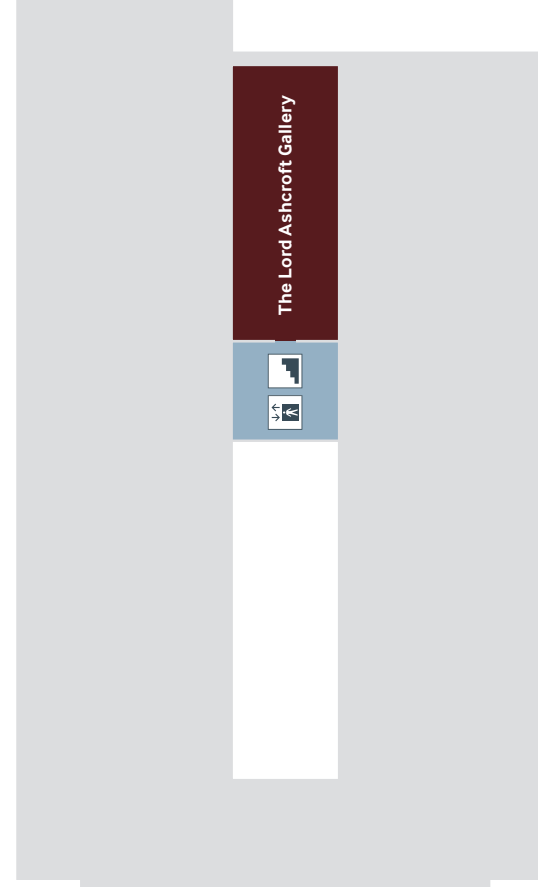


5

History Makers

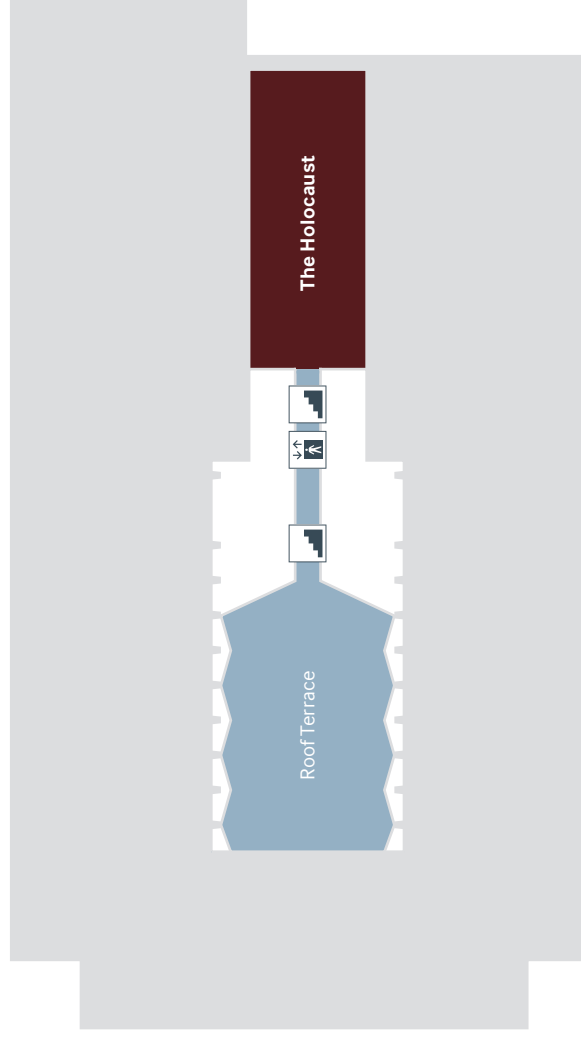
The Lord Ashcroft Gallery:
Extraordinary Heroes



4

Second World War
The Holocaust

Roof Terrace



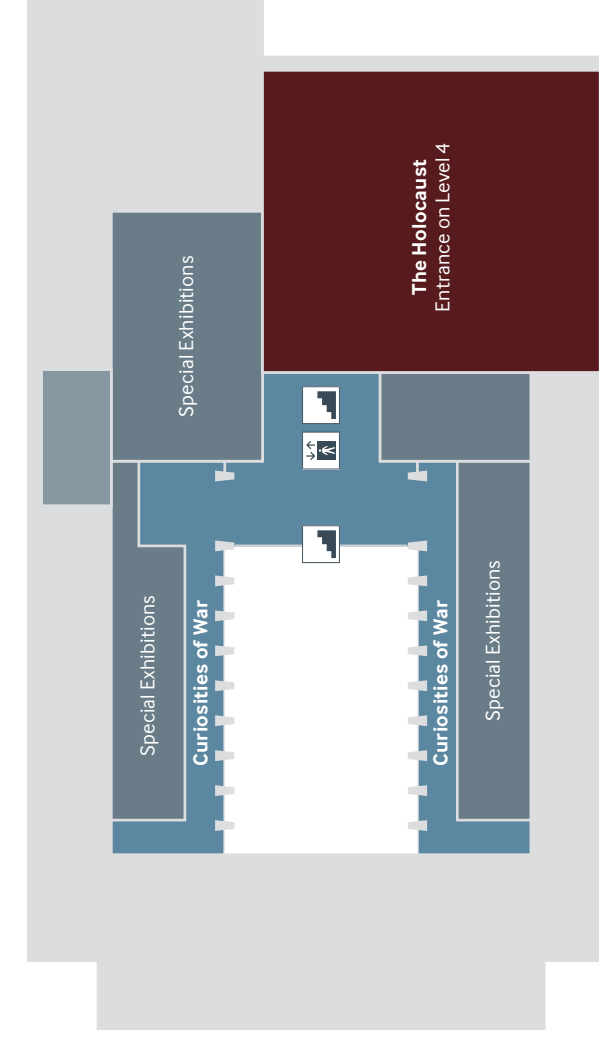
3

Special Exhibitions

Making a New World
Opening September 2018

History Makers

Curiosities of War



2

History Makers

Secret War
Peace and Security: 1945–2014

Conference Room

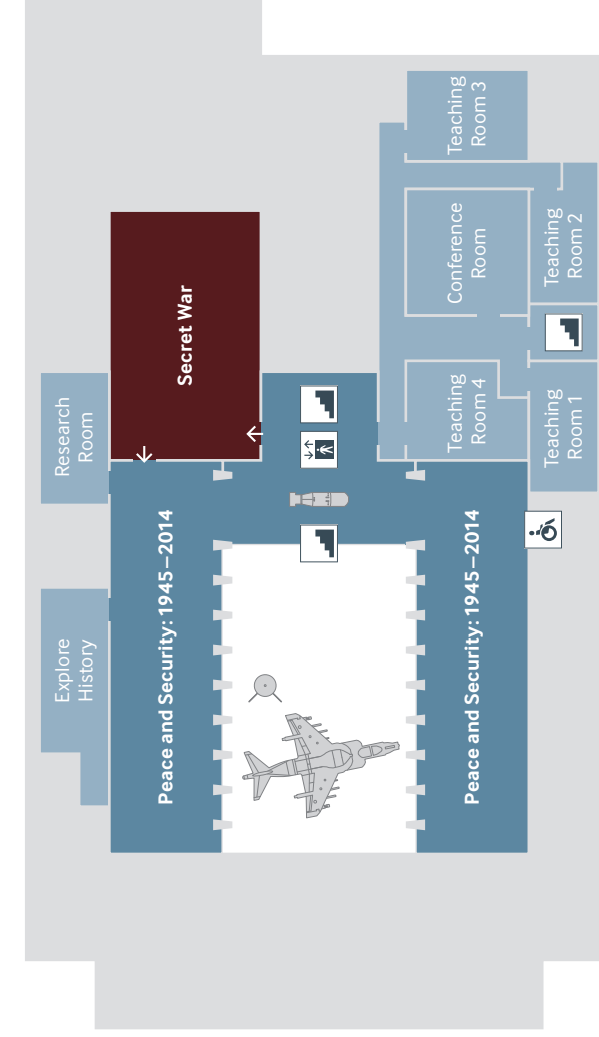
Explore History

Learning Centre:

Teaching Rooms 1–4

Research Room

Toilet



1

Second World War

A Family in Wartime
Turning Points: 1934–1945

Book Shop

Cinema

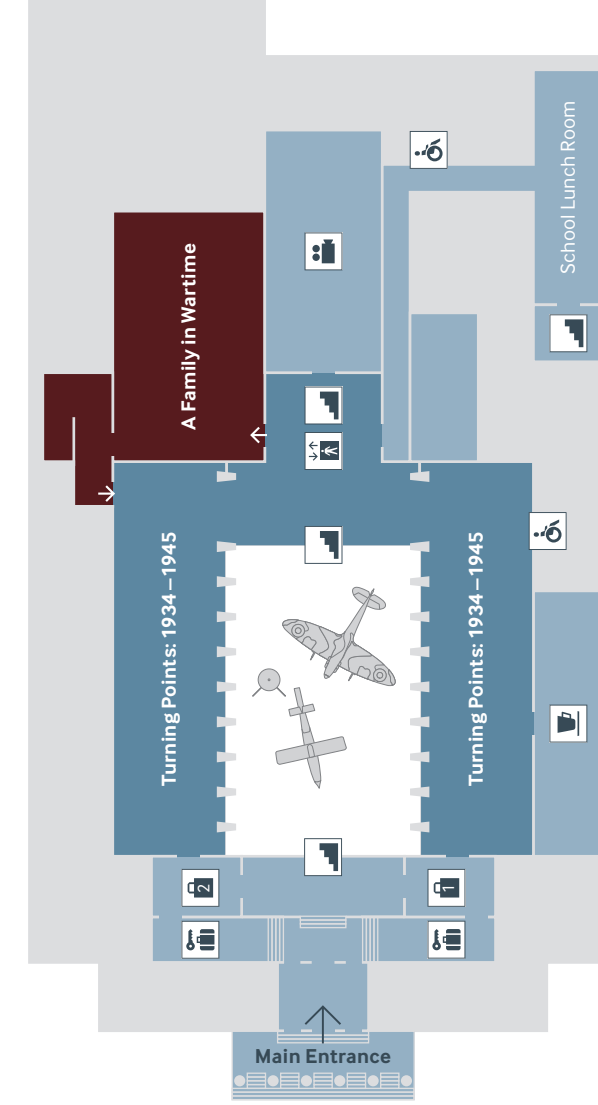
Lockers

Shop

Park View Room

Open during holidays

Toilet



0

First World War

First World War Galleries

History Makers

Witnesses to War

Café

Information

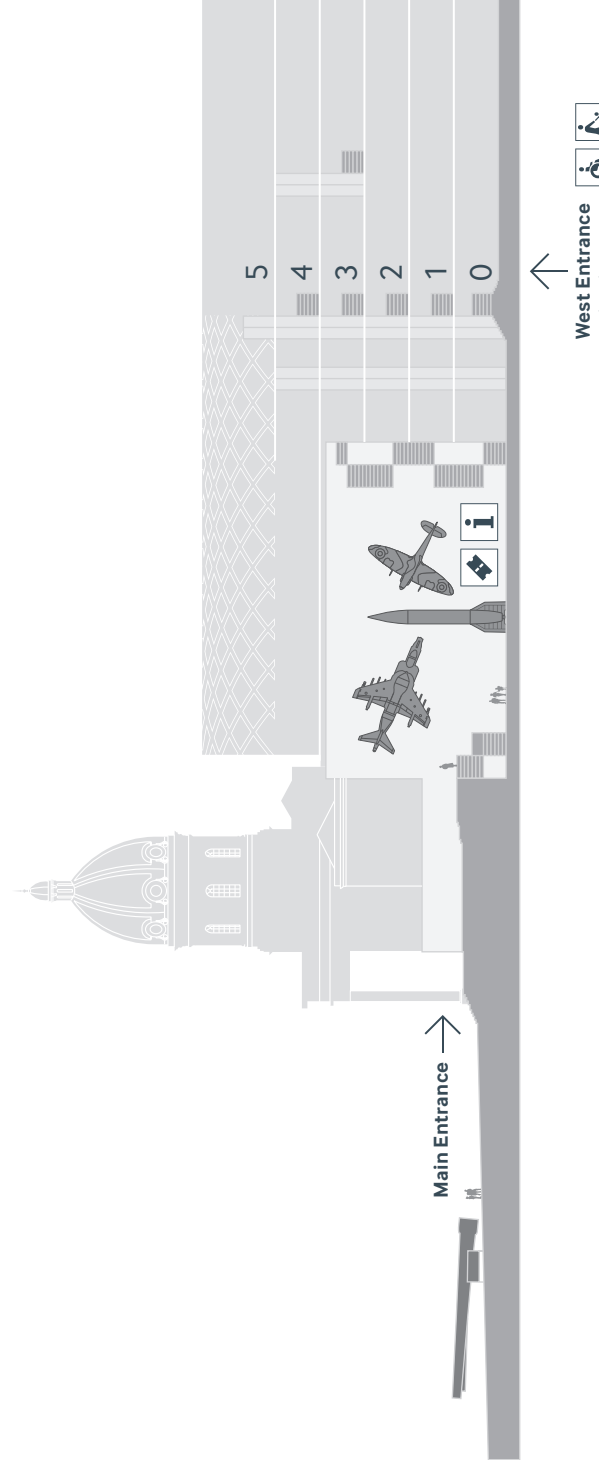
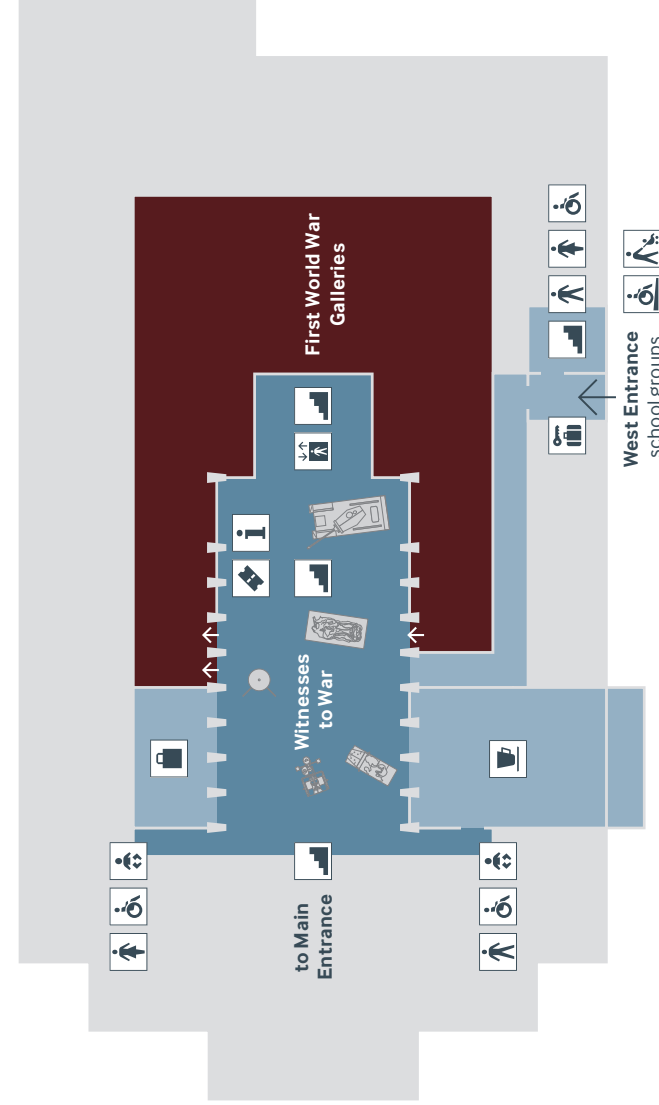
Lockers

Shop

Tickets

Toilets

Way Out



Welcome to IWM London

We have told the stories of conflict for over a century. Since 1917, people have entrusted us with their personal accounts of war, in the knowledge that we will continue to share them with future generations. Over 100 years later, Imperial War Museums now has a century of stories to tell.

Find out more about fighting on the front line and life at home 100 years ago in our **First World War Galleries** and visit our award-winning exhibition on **The Holocaust**. Discover the real story of the Alpress family during the Second World War in **A Family in Wartime** and discover stories of bravery in **The Lord Ashcroft Gallery**. Uncover the hidden world of spies in **Secret War** and explore personal stories and objects from the Second World War in **Turning Points 1934-1945**.



LOTTERY FUNDED

- Adapted Access
- Pushchair Access
- Book Shop / Shop
- Café / Park View Room
- Cinema
- Information
- Lift
- Lockers
- Stairs
- Tickets
- Male Toilet
- Female Toilet
- Adapted Toilet
- Baby Change

YOUR VISIT

Open

10am – 6pm daily. Closed 24 – 26 December.



Buy event tickets, guidebooks and get information about what's on today at our Information Desk on Level 0.



Our Café (Level 0, until 5.30pm daily) and Park View Room (Level 1, open during holidays) offer a wide choice of hot and cold food and drinks.



Take home a souvenir of your visit or shop online at iwmsshop.co.uk. Every purchase supports IWM.



Photographs and videos may be taken in the galleries for personal use, except where otherwise indicated. Ask a member of staff for further information.



We are fully wheelchair accessible. Ask at the Information Desk on Level 0 about how we can help you make the most of your visit.

Events Programme

We run a programme of events throughout the year, linked to our exhibitions and collections. Information about what's on today can be found on our digital screens located on Levels 0-3.

Explore History and Research Room

Access our collections and library on Level 2. The Research Room is open Monday – Thursday 10am – 1pm and 2 – 5pm (book online at iwm.org.uk) and Explore History is open Monday – Friday 11am – 1pm and 2 – 4pm. Closed on bank holidays.

First World War

First World War Galleries

Permanent Exhibition, Level 0



The Gallipoli Campaign, April 1915-January 1916 © IWM (Q 12219)

Discover the story of the First World War through the eyes of the British people and the Empire, both on the home front and the fighting fronts. On display are objects from IWM's collections including weapons, uniforms, diaries, keepsakes, film and art.

See how the war started, why it continued, how the Allies won and its impact on people's lives across the globe. Walk through a recreated trench with a Sopwith Camel plane swooping low overhead as a Mark V Tank looms above you.

FROM BEDLAM TO BAGHDAD

Daily tour* | 12pm and 3pm

Take a 40 minute introductory tour of Imperial War Museum London looking at the building's origin as Bethlem Hospital and exploring fascinating objects from our world-class collections.

Tickets:

Adult £10, Concession £7.50, Child £5

*Tours are subject to availability

Second World War

A Family in Wartime

Permanent Exhibition, Level 1



Women welders making stirrup pump handles during the Second World War © IWM (D 3589)

Discover how ordinary Londoners faced the challenges of rationing, evacuation and the Blitz during the Second World War through the story of the Allpress family.

Explore reconstructions of rooms as they would have been in the 1940s and see how the war affected life at home.

The Holocaust

Permanent Exhibition, Level 4

This award-winning exhibition traces the Nazi persecution and murder of Jewish people in Europe from 1933 to 1945. Learn how the political climate enabled Hitler to rise to power and how his ideas spread throughout Europe, ultimately affecting people all around the world.

Photographs, diaries, toys and film tell the stories of the people who lived through the Holocaust. Testimonies from survivors bring a moving perspective to these objects while a model of Auschwitz-Birkenau demonstrates the extent of events that occurred.

History Makers

Witnesses to War

Permanent Exhibition, Level 0



© IWM, IWM London, V2 and Spitfire in Altium

Witnesses to War presents nine important objects from our collection spanning over a century, highlighting IWM's role to tell the stories of conflict. This dramatic display features a Harrier jet and Spitfire plane, suspended above a V-2 rocket. Also on display is a T-34 tank and a 13-Pounder Gun from the First World War which became a memorial for the men who fought with it. Joining them is a Reuters Land Rover damaged by a rocket attack in Gaza.

Coming Soon...

MAKING A NEW WORLD

September 2018

Making a New World, a season of innovative exhibitions, installations and immersive experiences at IWM London will explore how the First World War has shaped the society we live in today.

Peace and Security: 1945–2014

Permanent Exhibition, Level 2



Saidam Hussein mural, detail © IWM

From Britain and Europe after the Second World War through to the Cold War and the attack on the World Trade Center in 2001, *Peace and Security* reveals how conflicts have been fought and communities divided in places such as Kosovo, Iraq and Afghanistan from 1945 to the present day.

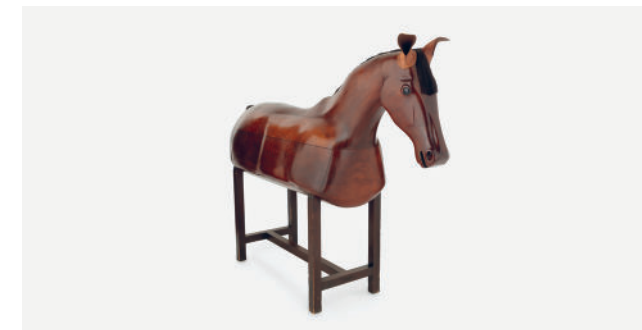
Secret War

Permanent Exhibition, Level 2

Secret War explores the undercover world of espionage, covert operations and the work of Britain's Special Forces. Discover how threats both at home and abroad were dealt with through the strategies and techniques of the men and women behind some of the most secret espionage missions of the last century.

Curiosities of War

Permanent Exhibition, Level 3



Wooden training horse © IWM (FEG 935)

See some of the more unexpected objects from our collections. Items on display range from a section of the bar where the Dambusters crew used to drink through to a sofa which troops in Afghanistan made out of HESCO bastion fencing.

The Lord Ashcroft Gallery: Extraordinary Heroes

Permanent Exhibition, Level 5

This display houses the world's largest collection of Victoria Crosses, alongside a significant collection of George Crosses, telling the extraordinary stories of the people who have been awarded these medals.

Accompanying the stories of those awarded the medals is artwork, film and photography exploring the concept of bravery and what motivates people to undertake acts of heroism.



SHARE YOUR EXPERIENCE

Post, tweet and snap your IWM experience with us today on Twitter via [@IWM](https://twitter.com/IWM) or on Instagram via [ImperialWarMuseums](https://www.instagram.com/ImperialWarMuseums) using [#IWMLondon](https://twitter.com/IWMLondon), or find us on Facebook.

MEMBERSHIP

Imperial War Museums is a charity. Your membership supports our historically important sites and world-leading collection. We couldn't do it without you.

Join us today or find out more at iwm.org.uk/membership

VISIT US

IWM is a family of five museums including **Churchill War Rooms**, the underground nerve centre below Westminster where Winston Churchill and his inner circle directed the Second World War, and **HMS Belfast**, Britain's iconic warship that saw action in key battles during the Second World War and Korean War.

Outside London, visit **IWM North** in Manchester where the 360° cinematic Big Picture Show immerses you in personal memories of conflict, and **IWM Duxford**, the former RAF fighter station and home of the Spitfire, located just outside Cambridge.

KEEP IN TOUCH

Enjoyed your visit? Let us know what you think through the contact form on our website.

Sign up for our eNews, packed with information about exhibitions and events at all our IWM sites iwm.org.uk/news

Cover: © IWM

Map

Please donate £1



LONDON